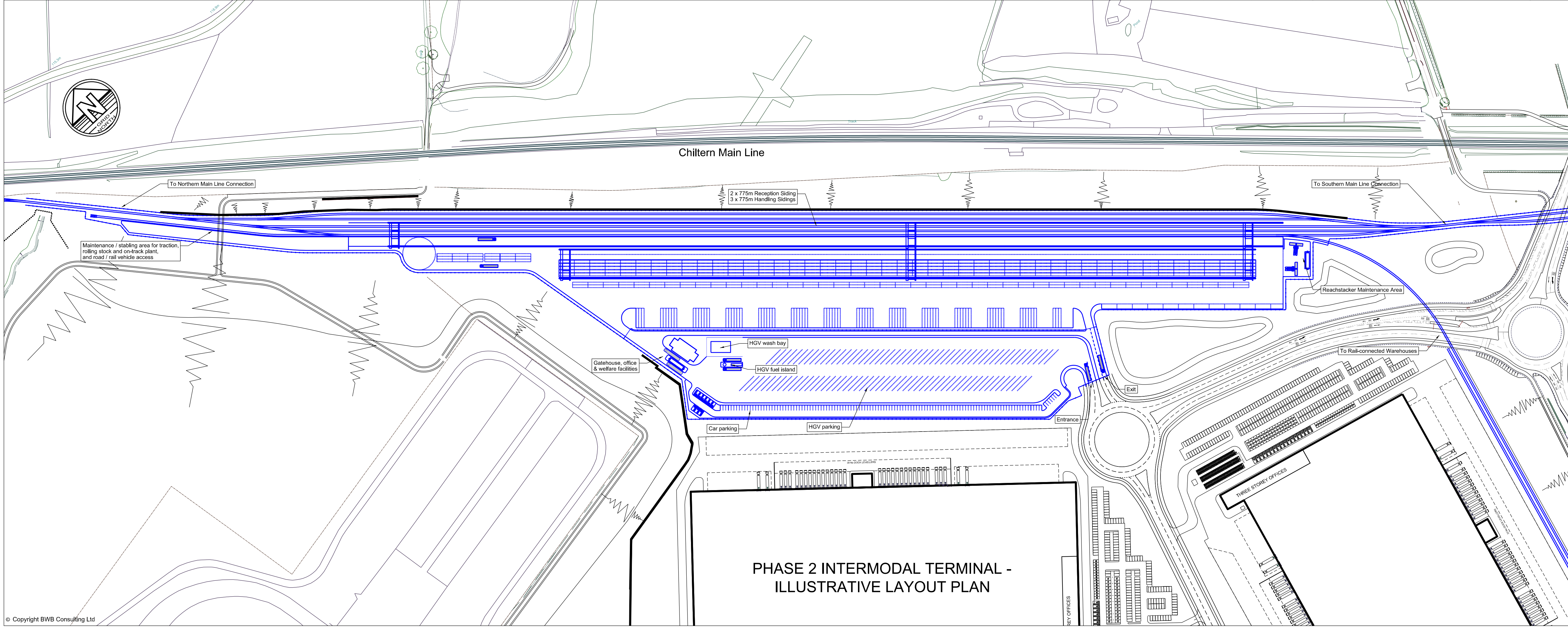
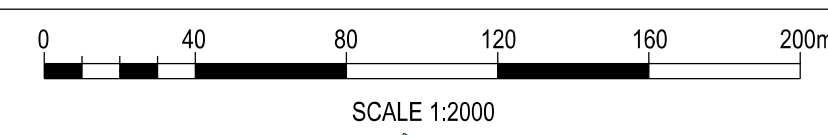


PHASE 1 INTERMODAL TERMINAL - ILLUSTRATIVE LAYOUT PLAN



PHASE 2 INTERMODAL TERMINAL - ILLUSTRATIVE LAYOUT PLAN



- Notes**
- Do not scale this drawing. All dimensions must be checked / verified on site. If in doubt ask.
 - All dimensions in metres unless noted otherwise. All levels in metres unless noted otherwise.
 - This drawing is to read in conjunction with all other relevant drawings and specifications.
 - All structure positions and sizes shown are indicative.
 - The proposed works will be subject to detailed design within the limits of deviation identified on the Works Plans.
 - Horizontal and vertical deviation of the rail alignments are permitted in accordance with Article 4 of the Development Consent Order.

- Legend**
- INTERMODAL TERMINAL - PHASE 1
 - INTERMODAL TERMINAL - PHASE 2

P03	13.05.26	Updated notes	AT	NG	NG
P02	10.01.26	Updated terminal layout phasing	AT	NG	NG
P01	19.09.25	Preliminary Issue	AT	NG	NG
Rev	Date	Details of issue / revision	Drw	Ch'g	Apv

Issues & Revisions



THE OXFORDSHIRE STRATEGIC RAIL FREIGHT INTERCHANGE AND HIGHWAYS ORDER 202X

ILLUSTRATIVE RAIL TERMINAL PLAN

Regulation:	5(2) (o)	Document:	2.11D
Drawn:	AT	Checked:	NG
Approved:	NG	Date:	19.09.25
BWB Ref:	NTH2479	Scale@A1:	1:2000
Project - Originator - Functional Breakdown - Spatial Breakdown - Form - Discipline - Number OxSRFI-IMT-TRK-01-DR-TR-00004			
Drawing Status	DCO Submission		Rev P03